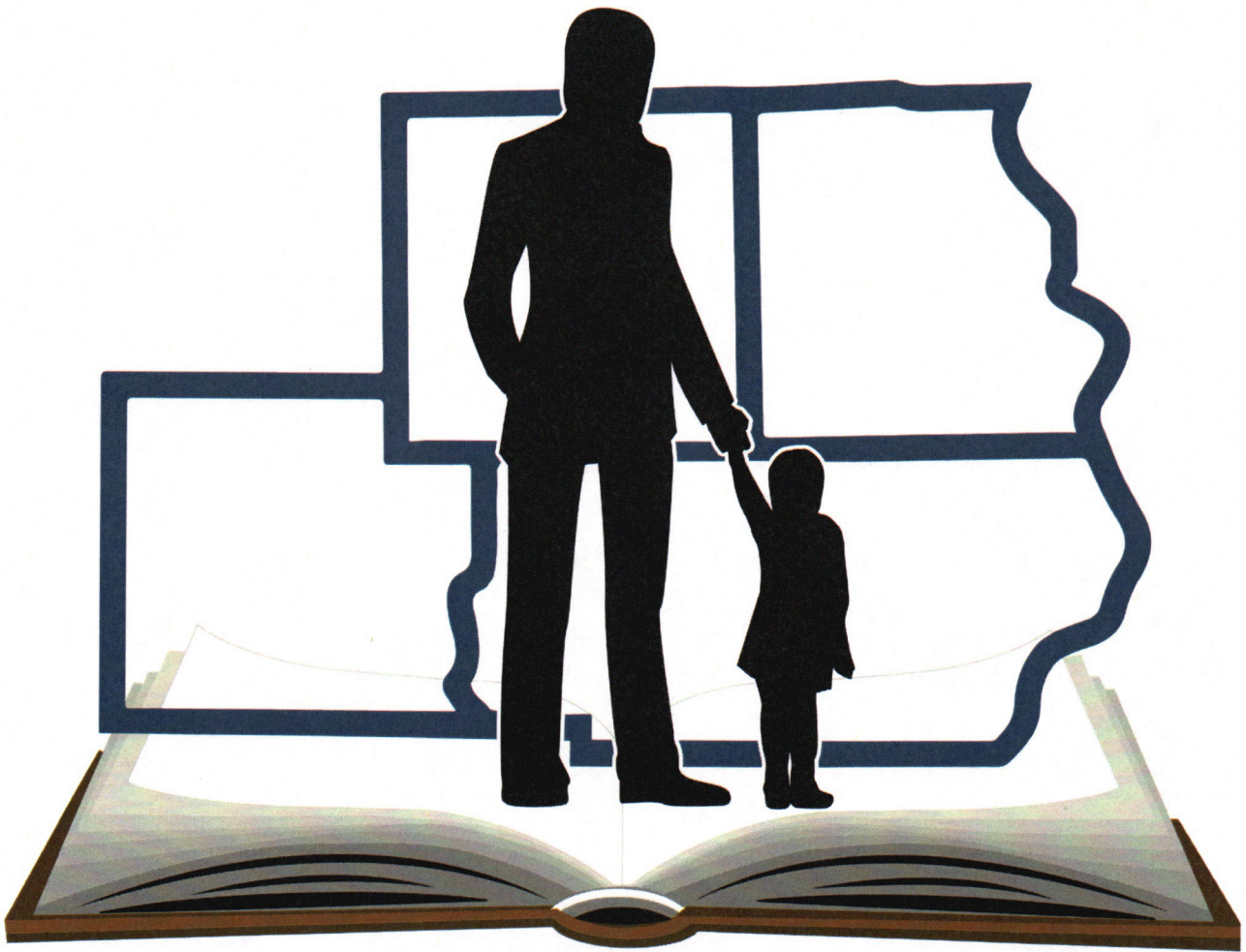


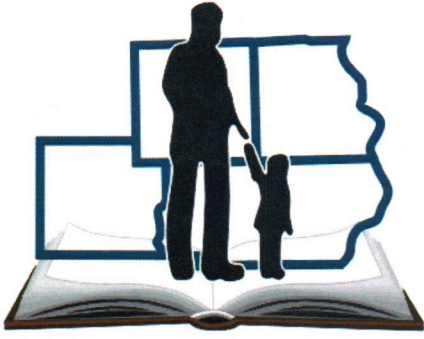
Quarterly Report - September, October, November

# Regional Office of Education #12

*Clay-Crawford-Jasper-Lawrence-Richland Counties*

**Jeremy Brush,**  
Regional Superintendent of Schools





# Regional Office of Education # 12

*Serving the students and educational professionals of Clay, Crawford, Jasper, Lawrence, and Richland Counties, Illinois*

Jeremy Brush, Regional Superintendent of Schools  
Corrie Ray, Assistant Regional Superintendent of Schools

December, 2024

Dear County Board Chair and Members:

As required by 105 ILCS 5/3-5 Report of official acts- Illinois Compiled Statutes:

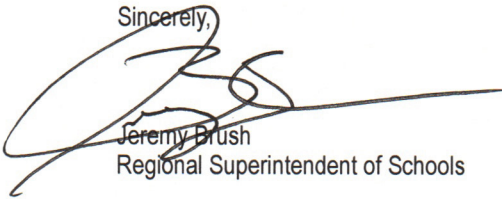
I, Jeremy Brush, affirm the enclosed report to be an accurate accounting of my acts as Regional Superintendent.

(105 ILCS 5/3-5) (from Ch. 122, par. 3-5)

Sec. 3-5. Report of official acts. The county superintendent shall present under oath or affirmation to the county board at its meeting in September and as nearly quarterly thereafter as it may have regular or special meetings, a report of all his acts as county superintendent, including a list of all the schools visited with the dates of visitation.

Please include this report on the agenda for your next scheduled meeting. Thank you for your assistance.

Sincerely,



Jeremy Brush  
Regional Superintendent of Schools

**Clay County**  
Courthouse  
P.O. Box 97  
Louisville, Illinois 62858  
618/665-3373  
Fax 618/665-3155

**Crawford County**  
300 West Main Street  
Suite 307  
Robinson, Illinois 62454  
618/544-2719  
Fax 618/546-1556

**Jasper County**  
County Office Building  
204 West Washington  
Newton, Illinois 62448  
618/783-2523  
Fax 618/783-4237

**Lawrence County**  
Courthouse  
1100 State Street  
Lawrenceville, Illinois 62439  
618/943-3522  
Fax 618/943-2513

**Richland County**  
407 South Whittle Avenue  
Olney, Illinois 62450  
618/392-4631  
Fax 618/392-3993

# Regional Office of Education #12

Serving Clay, Crawford, Jasper, Lawrence, and Richland Counties

Jeremy Brush, Regional Superintendent of Schools

## Quarterly Report of Activities September 2024 - November 2024

### Adult Education Services

<b>Number of GED Records Requests/Verifications</b>
66
<b>Number of GED Tests Administered in ROE 12 Pearson Vue Testing Center</b>
2
<b>Number of Alternative Methods of Credentialing - Illinois High School Diplomas</b>
8 - Including 2 for Regional Office of Education #20

### Bus Driver Trainings

Number Initial Trainings	Number of Initial Training Participants	Number Refresher Trainings	Number of Refresher Participants	Number of ELDT (Federal) Trainings	Number of ELDT Participants
1	7	0	0	2	5

### Compliance (Public School Recognition)

<b>Compliance Visits</b>
1

### Early Childhood Services

Number of Sites	Number of Classrooms	Number of Sessions	Total Students Enrolled	Number of Family Outreach/ Parent Education Events
4	6	9	146	3

**Educator Licensure**

Type	Total
Total Licenses Issued	72
Total Educators Registered	92
Total Licenses Registered	95
Total Educator PEL Endorsements Issued	17
New Substitute Authorizations Issued	37
Re-Issued Substitute Authorizations (Renewals)	26
Total Substitute Licenses Registered	47
Total Educator License with Stipulations (ELs - Paraprofessionals) Issued	6

**Fingerprinting Services for Criminal History Record Information (CHRI)**

Number of Persons Fingerprinted
155

**Health Life/Safety**

Building Inspections Conducted	Building Permits Issued	Occupancy Permits Issued	Demolition Permits Issued	Amendments Processed	Ten Yr Surveys Processed	Maintenance Grant Apps Processed
33	4	4	0	0	1	4

**High School Equivalency Verifications (GED Records)**

Number of Records Requests/Verifications
66

**Home School Registrations**

Number of Registrations
1

**Homeless Services**

Number of Students Served	Staff Trainings and Monitoring Events	Estimated Number of Participants in Staff Trainings
489	8	265

**Instructional Coaching Services**

Number of Visits	Number of Participating Districts	Number of Teachers Coached
40	2	4

\*Instructional coaching began after schools returned to session August 15.

**Professional Development**

Number of Events/Trainings	Number of Participants
18	260

**Regional Board of School Trustees**

Meetings	Action
0	We had 0 Petitions for Detachment/Annexation

**Right Track Truancy Program**

Truancy Review Board (TRB) Mtgs	Court Cases	Student Intervention Meetings	Home Visits	School Admin Contacts	TRB Summons Delivered
15	4	28	1	120	10

\* TRB Summons Delivered indicate the number of students who were called before the TRB.  
 \* No TRB meetings are held in June-July-August.

**Short-Term Substitute Teacher Trainings**

Number of Events/Trainings	Number of Participants
2	20

**Student Events/Programs**

Number of Events	Number of Participants
0	0

**Student Work Permits**

Number of Permits Issued
9

**Truant Alternative/Optional Education/Regional Safe School Programs (ASSIST Programs)**

Number of Students Enrolled in Truant Alternative	Number of Students Enrolled in Safe School
15	24

**University Cohorts - EIU Graduate Courses Offered Through ROE #12**

Current Number of EIU Courses In Progress	Total Number of Enrollees
1	7

**Activities of the Regional Superintendent**

Date	Activity
Sept 4, 2024	Illinois Principal Association Fall Social - Newton, Illinois
Sept 5, 2024	Meeting at Lawrence County Health Department on CPR
Sept 5, 2024	Health/Life Safety Inspections - Flora CUSD #35
Sept 6, 2024	Short Term Substitute Training - Robinson ROE 12 PD Center
Sept 17, 2024	Health/Life Safety Inspections - Oblong CUSD #4, Palestine CUSD #3
Sept 18-19, 2024	Illinois Association of Regional School Superintendents General Session - Springfield
Sept 19, 2024	Health/Life Safety Inspections - Robinson CUSD #2
Sept 23, 2024	Illinois Association of Regional School Superintendents Area VI Meeting - Murphysboro
Sept 24, 2024	Lead Administrator Academy - Teacher Evaluation - Olney ROE 12 PD Center
Oct 1, 2024	State of Illinois School Safety Meeting - Zoom w/ Illinois State Police
Oct 3, 2024	Bi-monthly Illinois State Board of Education Meeting
Oct 7, 2024	Lunch with Senator Chapin Rose - Quail Creek Country Club - Robinson

Date	Activity
Oct 7, 2024	Discussion on AI Summit for Schools - IARSS Area VI
Oct 17, 2024	ISBE Bi-monthly board meeting
Oct 20-22, 2024	Illinois Principal's Association General Session - Peoria
Oct 24, 2024	Lincoln Grade School Elevator Inspection
Oct 24, 2024	Trick or Treat at the Trail - Lincoln Trail College
Oct 29, 2024	Meeting with Lawrence County CUSD #20
Oct 30, 2024	Birth to 5 Action Council meeting
Nov 1, 2024	Southern Illinois Alliance for Future Educators (SIAFE) Meeting - Olney ROE 12 PD Center
Nov 4, 2024	US Census and Boundary Review Meeting
Nov 6-7, 2024	Illinois Association of Regional School Superintendents General Session - Springfield
Nov 13, 2024	Illinois Association of Regional School Superintendents Area VI Meeting - Mt. Vernon
Nov 14, 2024	PACE Roundtable - Lincoln Trail College - ROE 12, IECC, Hutsonville #1, Robinson #2, Palestine #3, Oblong #4, Lawrence #20, Red Hill #10 all in attendance.
Nov 15, 2024	Springfield to file election petitions
Nov 20, 2024	Birth to 5 Action Council meeting
Nov 21, 2024	Board of Higher Education and ROE partnership on Alternative Methods of Credentialing

**Regional Superintendent's Non-Commuting Mileage**

Total Miles
1367

*Note: Many of our services are driven by the school calendar; thereby, reflecting varying numbers from report to report.*

I, Jeremy Brush, affirm this report to be an accurate accounting of my acts as Regional Superintendent of Schools for the Regional Office of Education #12.

(105 ILCS 5/3-5) (from Ch. 122, par. 3-5)  
 Sec. 3-5. Report of official acts. "The county superintendent shall present under oath or affirmation to the county board at its meeting in September and as nearly quarterly thereafter as it may have regular or special meetings, a report of all his/her acts as county superintendent, including a list of all the schools visited with dates of visitation."



Jeremy Brush  
 Regional Superintendent of Schools  
 Regional Office of Education #12  
 Clay-Crawford-Jasper-Lawrence-Richland

**Want More Information About the ROE?**



[www.roe12.org](http://www.roe12.org)



[www.facebook.com/regoffed12](http://www.facebook.com/regoffed12)



[www.twitter.com/RegOffEd12](http://www.twitter.com/RegOffEd12)



[https://calendar.google.com/calendar/embed?src=roe12.org\\_dsanlsogrdu8655akld4q1ejt8@grou.p.calendar.google.com&ctz=America/Chicago](https://calendar.google.com/calendar/embed?src=roe12.org_dsanlsogrdu8655akld4q1ejt8@grou.p.calendar.google.com&ctz=America/Chicago)

This and all ROE #12 Quarterly Reports are available electronically on our website at <https://www.roe12.org/general-information/quarterly-and-annual-reports-newsletter-archives/>

**Have Questions About Anything In This Report?**

Contact Regional Superintendent Jeremy Brush directly via email at [jbrush@roe12.org](mailto:jbrush@roe12.org).

**Want To Be On Our Mailing List?**

Contact Regional Superintendent Jeremy Brush at [jbrush@roe12.org](mailto:jbrush@roe12.org) and you'll receive ROE 12 communications directly to your inbox!