

Regional Office of Education #12

Clay-Crawford-Jasper-Lawrence-Richland Counties

Quarterly Report of Activities June - August, 2016

(Many of our services are driven by the school calendar; thereby, reflecting varying numbers)

Bus Driver Trainings

Number Initial Trainings	Number of Initial Training Participants	Number Refresher Trainings	Number of Refresher Training Participants
1	11	11	256

Compliance (School Recognition)

Compliance Visits
0 (Conducted every Spring)

Early Childhood Services

Number of Sites	Number of Classrooms	Number of Sessions	Total Students Enrolled	Number of Family Outreach/ Parent Education Events
5	6	9	155	5

Educator Licensure

Type	Total
Total Licenses Issued	44
Total Educators Registered	394
Total Licenses Registered	399
Total Educator PEL Endorsements Issued	3
Total Substitute Authorizations Issued	73
Total Substitute Licenses Registered	30
Total Educator License with Stipulations (ELs - Paraprofessionals) Issued	11

Fingerprinting Services for Criminal History Record Information (CHRI)

Number of Persons Fingerprinted
205

Health Life/Safety

Buildings Inspected	Building Permits Issued	Occupancy Permits Issued
0 (Annual Inspections Conducted Earlier)	1	1

High School Equivalency Verifications (GED Records)

Number of Records Requests/Verifications
85

Home School Registrations

Number of Registrations
9

Homeless Services

Number of Students Served	Staff Training Events	Estimated Number of Participants in Staff Trainings
N/A	1	5

Learning Technology Center VI

Number of Districts/Entities Served	Number of Events/Trainings	Estimated Number of Participants
189	20	530

Professional Development

Number of Events/Trainings	Number of Participants
1	6

Regional Board of School Trustees

Meetings	Action
1	Seated new member 1 Petition for Detachment/Annexation Approved

Right Track Truancy Program

Truancy Review Board (TRB) Mtgs	Court Cases	Student Intervention Meetings	Home Visits	School Admin Contacts	TRB Summons Delivered
N/A	0	5	2	52	0

Student Events/Programs

Number of Events	Number of Participants
N/A	N/A

Student Work Permits

Number of Permits Issued
34

Truant Alternative/Optional Education/Regional Safe School Programs (ASSIST Programs)

Number of Students Enrolled in Truant Alternative	Number of Students Enrolled in Safe School
40	2

Activities of the Regional Superintendent

Date	Activity
Jun 9, 2016	ISBE Phone Conference
Jun 10, 2016	Interview with WTHI, Re: School Funding/Sub Teachers, Etc.
Jun 14, 2016	Meeting with Connie Valentine, Re: TASC HS Equivalency Testing
Jun 15, 2016	IARSS Area VI Meeting in Mt. Vernon
Jun 16, 2016	ISBE Phone Conference
Jun 22, 2016	Meeting with Flora CUSD #35 Superintendent, Re: Bond Issue
Jun 23, 2016	ROE 12 Professional Development Advisory Committee Meeting in Newton
Jun 24, 2016	Retirement Luncheon for ROE 12 Early Childhood Director Peg Cain in Olney

Date	Activity
Jun 30, 2016	ISBE Phone Conference
Jul 11, 2016	Regional Board of School Trustees Meeting in Olney
Jul 13-15, 2016	IARSS General Membership Meeting in Springfield
Jul 20, 2016	IARSS Health Life/Safety Inspector Training in Springfield
Jul 25, 2016	Learning Technology Center Fiscal Agent Phone Conference
Jul 26, 2016	IARSS Communications Committee Phone Conference
Aug 11, 2016	ISBE Phone Conference
Aug 15, 2016	IARSS Communications Committee Phone Conference
Aug 16, 2016	Meeting with Sheila Ritter, Richland County Treasurer, Re: 9/11 Traveling Memorial
Aug 17, 2016	IARSS Area VI Meeting in Mt. Vernon
Aug 23, 2016	Annual Audit Entrance Phone Conference
Aug 25, 2016	IARSS General Membership Meeting in Springfield
Aug 30, 2016	IARSS Connecting Conference in Springfield

Regional Superintendent's Mileage

Total Miles
3983

ROE #12 Events of Note

Regional Superintendent Discusses Impact of Budget Impasse on Schools

Regional Superintendent of Schools Monte Newlin was recently interviewed by WTHI-TV for a story that aired on June 10th. In that broadcast, Newlin talked about how the (then) state budget impasse could prevent the opening of schools in the fall and the fallout that could result from the failure to pass a budget agreement. Watch the interview at <http://wthitv.com/.../if-schools-dont-open-on-time-itll-be-a.../>



Regional Superintendent Talks About The Shortage of Substitute Teachers

Regional Superintendent Monte Newlin detailed the challenges that an ever-shrinking pool of substitute teachers is having on area schools in a WTHI-TV interview that aired on June 21st. Watch the entire story at <http://wthitv.com/.../local-educator-addresses-teacher-short.../>

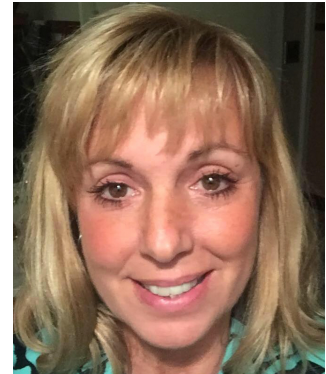


ROE 12 Honors Retiring Early Childhood Director and Welcomes Her Replacement

ROE 12's Early Childhood Director Peg Cain retired on June 30th after many years of service to the students of our five-county region. In addition to her tenure at the ROE, Peg also had previously served as a teacher in the Hutsonville and Oblong School Districts, and had also run her own daycare. She was honored at a luncheon in Olney on June 24th.



With Peg's departure, we have the opportunity to welcome Christie Butcher of Robinson as the Early Childhood Director at the ROE. Christie comes to us from having served early learners in Oblong CUSD #4 for many, many years in addition to spending some time in publishing.



New Appointed to Regional Board of School Trustees

At their regular meeting on Monday, July 11, 2016, the Regional Board of School Trustees for Clay, Crawford, Jasper, Lawrence, and Richland counties appointed Julie New of Lawrenceville to fill the vacancy created by the resignation of Josh Weger. New has experience in education having been employed as a school social worker in the region. She has also served on the Lawrence County Board and currently serves on the Lawrence County Arts Council. She is employed as a social worker at the Lawrence Correctional Center through Wexford Health Sources. New takes her oath of office, administered by Regional Superintendent of Schools Monte Newlin.



Regional Superintendent Gets Wet For NOW

Regional Superintendent Monte Newlin joined Hutsonville High School Principal Guy Rumler and Hutsonville Unit 1 Superintendent Julie Kraemer in the dunking booth to support the NOW Program during Hutsonville's annual Riverfest on Friday, August 5th.



Want More Information About the ROE?



www.roe12.net



www.facebook.com/regoffed12



www.twitter.com/RegOffEd12



Download our App on the
iTunes App Store
or
Google Play

This and all ROE #12 Quarterly Reports are available electronically on our website at http://www.roe12.net/crbst_1.html

Have Questions About Anything In This Report?

Contact Regional Superintendent Monte Newlin directly via email at mnewlin@roe12.org.

Want To Be On Our Mailing List?

Contact Regional Superintendent Monte Newlin at mnewlin@roe12.org and you'll receive ROE 12 communications that go directly to the inbox of over 1800 educators and partners in our five-county region!